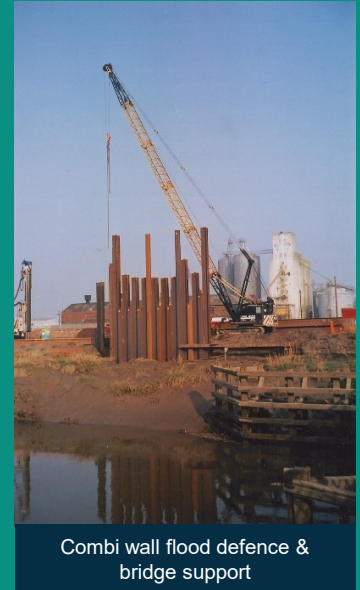
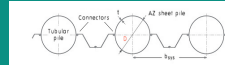




Expert opinion on installation of 40m long quay wall piles



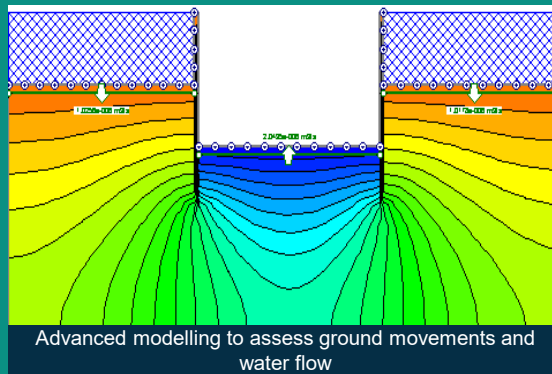
Temporary king post wall bored into rock



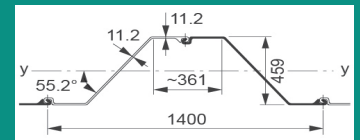
Combi wall flood defence & bridge support



Sheet piles to support 8m excavation into very soft clay utilising jet-grouted base prop & tension piles



Advanced modelling to assess ground movements and water flow



## Design

### SHEET PILES & KING POSTS

- Both forms of retaining wall are designed using routine earth pressure theory implemented in industry standard software.
- Sheet piles & king posts can act in cantilever, be propped or anchored.
- Where ground movement prediction, ground water flow or design optimization is required advanced numerical methods such as finite element analysis can be adopted.

## Sheet Pile and King Post Retaining Walls

**Sheet pile** retaining walls may be constructed to retain earth, water or any other filling materials. Thinner in section than concrete walls, they can be constructed above ground and do not need time to cure to reach full strength. Sheet pile walls can be used for:

- Water front structures, e.g wharfs, quays and piers;
- Building diversion dams, such as cofferdams;
- River bank protection;
- Ground retention for excavation in soil.

Frequently used in temporary situations, they can be removed after use.

**King post** retaining walls can be very cost effective for low to medium retained heights of soil. They comprise widely spaced king posts, usually Universal Column sections, with infill panels of concrete, timber or steel. Construction can be:-

- Bottom up - where the wall is constructed above ground and fill placed behind the panels;
- Top down - where the in-fill panels are progressively pushed down as excavation in front of the wall proceeds.

At Remedy Geotechnics we can advise on and design all forms of sheet pile & king post wall.

### CONTACT US

London & Midlands    North & Scotland  
 0207 206 2576    01423 589500  
 01788 211778  
 admin@RemedyGeotechnics.com  
 www.remedygeotechnics.com  
 Follow Us @RemGeotechnics / LinkedIn